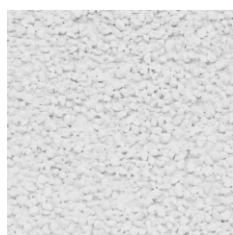
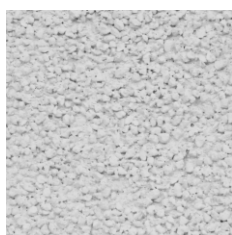


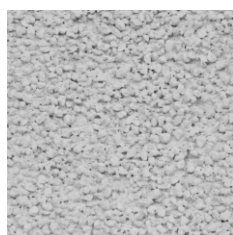
WZORNIK KOLORÓW TYNKÓW AKRYLOWYCH, FARB AKRYLOWYCH I SILIKONOWYCH



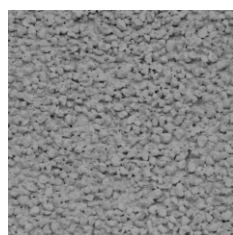
G 162



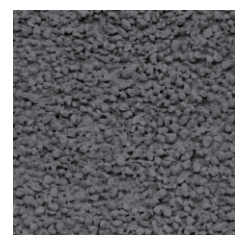
H 162



J 162



K 162



L 162



G 157



H 157



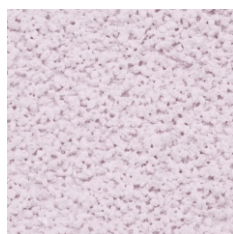
J 157



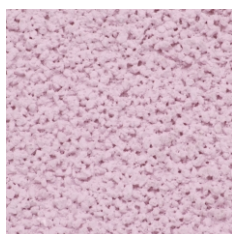
K 157



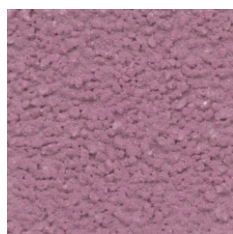
L 157



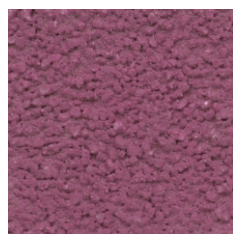
G 143



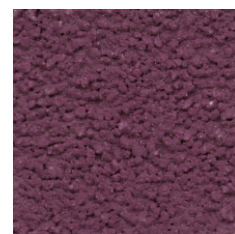
H 143



J 143



K 143



L 143



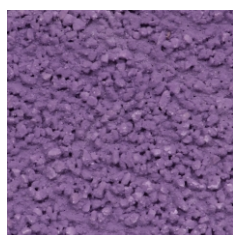
G 148



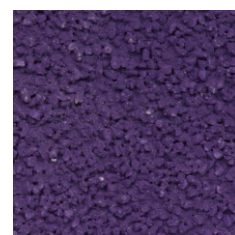
H 148



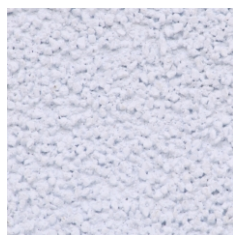
J 148



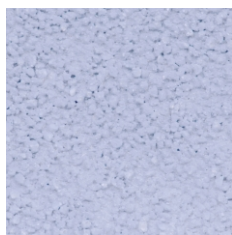
K 148



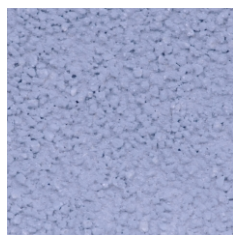
L 148



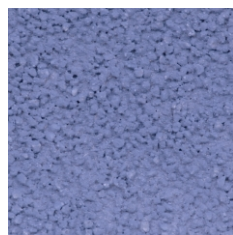
G 021



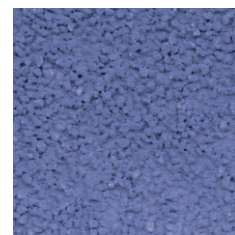
H 021



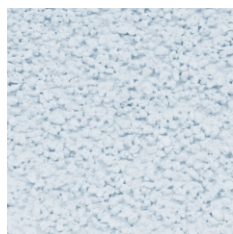
J 021



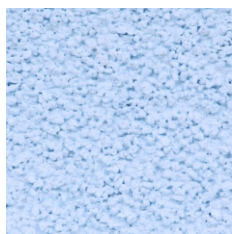
K 021



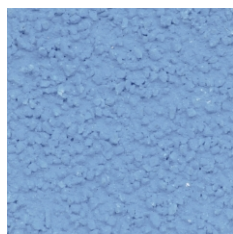
L 021



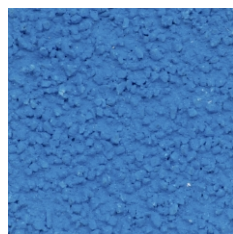
G 016



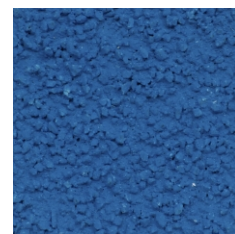
H 016



J 016



K 016



L 016

UWAGA!

Przedstawione we wzorniku próbki są wybrane losowo. Pełna paleta barw obejmuje 720 kolorów.

Ze względu na technologię druku / ustawienia monitora, prezentowane kolory mogą nieznacznie różnić się od rzeczywistego koloru wyrobu. Ostateczny wybór koloru i struktury powinien być dokonany na podstawie próbnika kolorów i struktur.

STRONA 1 z 3



Przedsiębiorstwo Produkcyjno-Handlowe
MATRES REVCO Sp. z o.o.
Ul. 22 Lipca 6
83-132 Morzeszczyn
www.matresrevco.pl

tel. +48 58 536 28 03-05,
tel. +48 58 536 27 67, tel. +48 58 536 27 14
fax. +48 58 536 27 25
e-mail: matresrevco@matresrevco.pl

WZORNIK KOLORÓW TYNKÓW AKRYLOWYCH, FARB AKRYLOWYCH I SILIKONOWYCH



G 087



H 087



J 087



K 087



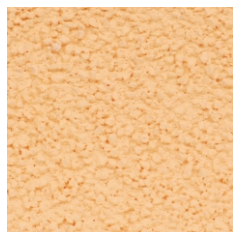
L 087



G 089



H 089



J 089



K 089



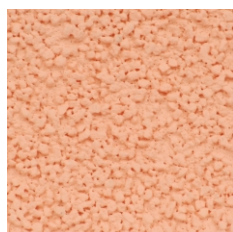
L 089



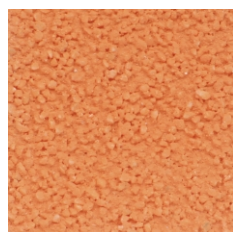
G 129



H 129



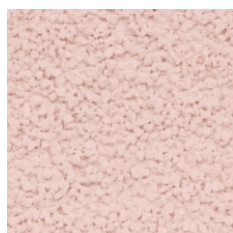
J 129



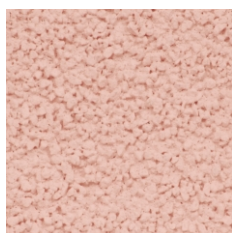
K 129



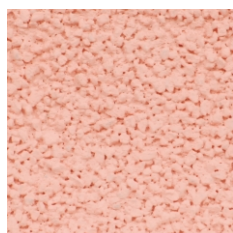
L 129



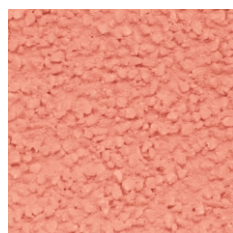
G 136



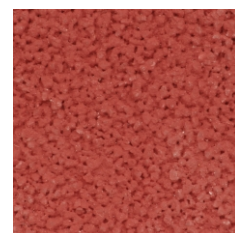
H 136



J 136



K 136



L 136



G 113



H 113



J 113



K 113



L 113



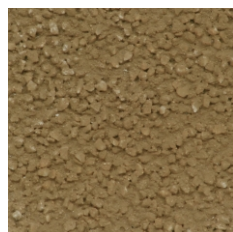
G 100



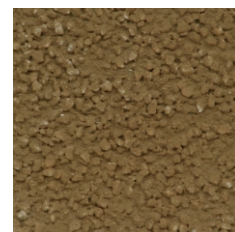
H 100



J 100



K 100



L 100

UWAGA!

Przedstawione we wzorniku próbki są wybrane losowo. Pełna paleta barw obejmuje 720 kolorów.

Ze względu na technologię druku / ustawienia monitora, prezentowane kolory mogą nieznacznie różnić się od rzeczywistego koloru wyrobu. Ostateczny wybór koloru i struktury powinien być dokonany na podstawie próbnika kolorów i struktur.

STRONA 2 z 3



Przedsiębiorstwo Produkcyjno-Handlowe
MATRES REVCO Sp. z o.o.
Ul. 22 Lipca 6
83-132 Morzeszczyn
www.matresrevco.pl

tel. +48 58 536 28 03-05,
tel. +48 58 536 27 67, tel. +48 58 536 27 14
fax. +48 58 536 27 25
e-mail: matresrevco@matresrevco.pl

WZORNIK KOLORÓW TYNKÓW AKRYLOWYCH, FARB AKRYLOWYCH I SILIKONOWYCH



G 077



H 077



J 077



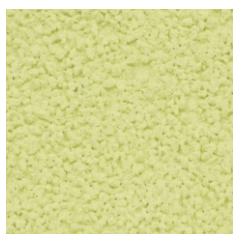
K 077



L 077



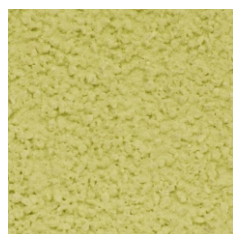
G 071



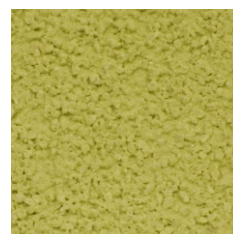
H 071



J 071



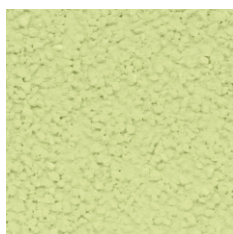
K 071



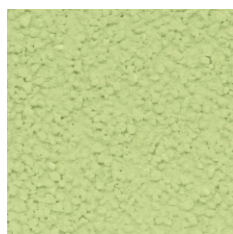
L 071



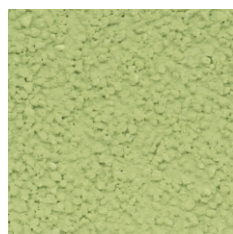
G 058



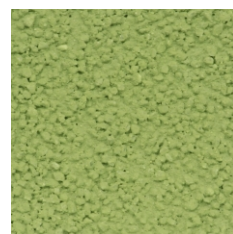
H 058



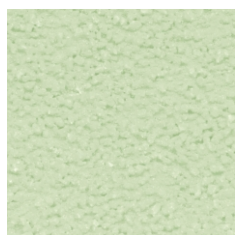
J 058



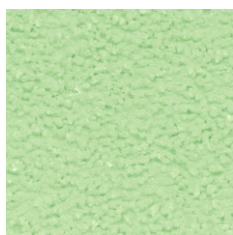
K 058



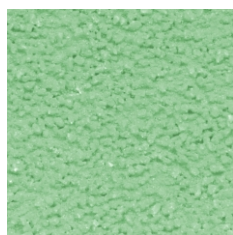
L 058



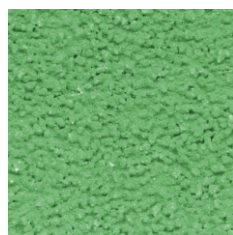
G 052



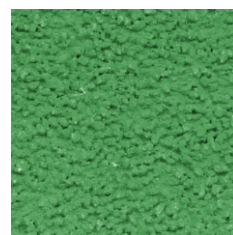
H 052



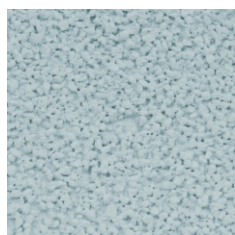
J 052



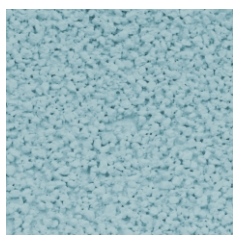
K 052



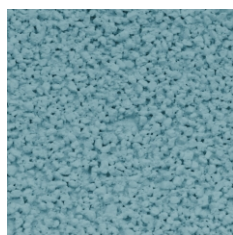
L 052



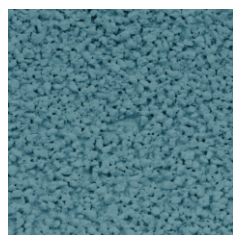
G 031



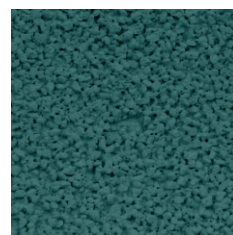
H 031



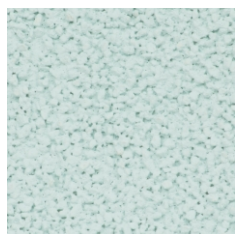
J 031



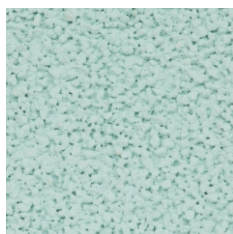
K 031



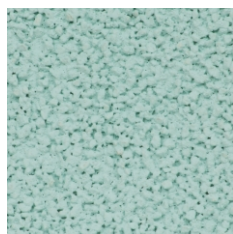
L 031



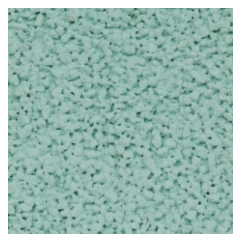
G 037



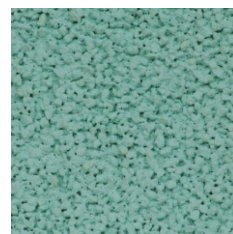
H 037



J 037



K 037



L 037

UWAGA!

Przedstawione we wzorniku próbki są wybrane losowo. Pełna paleta barw obejmuje 720 kolorów.

Ze względu na technologię druku / ustawienia monitora, prezentowane kolory mogą nieznacznie różnić się od rzeczywistego koloru wyrobu. Ostateczny wybór koloru i struktury powinien być dokonany na podstawie próbnika kolorów i struktur.

STRONA 3 z 3



Przedsiębiorstwo Produkcyjno-Handlowe
MATRES REVCO Sp. z o.o.
Ul. 22 Lipca 6
83-132 Morzeszczyn
www.matresrevco.pl

tel. +48 58 536 28 03-05,
tel. +48 58 536 27 67, tel. +48 58 536 27 14
fax. +48 58 536 27 25
e-mail: matresrevco@matresrevco.pl